

EViews[®] 11

Student Version Lite



IHS Markit[®]

EViews 11 Student Version Lite



EViews 11 Student Version Lite

Copyright © 1994–2020 IHS Global Inc.
All Rights Reserved

ISBN: 978-1-880411-61-2

This software product, including program code and manual, is copyrighted, and all rights are reserved by IHS Global Inc. The distribution and sale of this product are intended for the use of the original purchaser only. Except as permitted under the United States Copyright Act of 1976, no part of this product may be reproduced or distributed in any form or by any means, or stored in a database or retrieval system, without the prior written permission of IHS Global Inc.

Disclaimer

The authors and IHS Global Inc. assume no responsibility for any errors that may appear in this manual or the EViews program. The user assumes all responsibility for the selection of the program to achieve intended results, and for the installation, use, and results obtained from the program.

Trademarks

EViews® is a registered trademark of IHS Global Inc. Windows, Excel, PowerPoint, and Access are registered trademarks of Microsoft Corporation. PostScript is a trademark of Adobe Corporation. X11.2 and X12-ARIMA Version 0.2.7, and X-13ARIMA-SEATS are seasonal adjustment programs developed by the U. S. Census Bureau. Tramo/Seats is copyright by Agustin Maravall and Victor Gomez. Info-ZIP is provided by the persons listed in the infozip_license.txt file. Please refer to this file in the EViews directory for more information on Info-ZIP. Zlib was written by Jean-loup Gailly and Mark Adler. More information on zlib can be found in the zlib_license.txt file in the EViews directory. Bloomberg is a trademark of Bloomberg Finance L.P. All other product names mentioned in this manual may be trademarks or registered trademarks of their respective companies.

IHS Global Inc.
4521 Campus Drive, #336
Irvine CA, 92612-2621
Telephone: (949) 856-3368
Fax: (949) 856-2044
e-mail: sales@eviews.com
web: www.eviews.com

February 12, 2020

Table of Contents

EIEWS STUDENT VERSION LITE	1
Student Version Lite Limitations	1
Licensing and Support Restrictions	1
Excluded Features	1
Capacity Restrictions	2
Saving and Output Restrictions	2
GETTING STARTED	3
Installing EViews	3
Windows Installation	3
Mac Installation	4
Registering EViews	5
What is Registration?	5
Frequently Asked Questions about Registration	7
Updating Your Copy of EViews	8
USING EIEWS STUDENT VERSION LITE	9
Starting EViews	9
An EViews Primer	10
Manuals and Local Help System	11
Online Help	12

EViews Student Version Lite

The EViews Student Version Lite is a modified version of the standard edition of EViews 11. This version features different licensing terms, capacity and feature limitations, restricted technical support, and minimal printed documentation (at a greatly reduced price).

Student Version Lite Limitations

Licensing and Support Restrictions

The EViews Student Lite license restricts use to a single machine by a single user. The user must be a currently enrolled student or currently employed faculty member. Note specifically that the restriction to a single user implies that EViews Student Lite is not licensed for use on public access computers.

EViews Student Lite is licensed for *up to* one (1) year.

Lastly, the Student Version Lite software requires registration/product activation (see “[Registering EViews](#)” on page 5). The Lite version is limited to a single activation which must be refreshed on a regular basis.

It is worth noting that *re-installing* the software on a given computer will not be counted as a new installation.

In addition, technical support for EViews Student Lite is limited to issues related only to installation and registration of EViews. Questions regarding the operation of the software should be directed to your instructor or computer administrator. User-provided online help may be available at the EViews forum (<http://forums.eviews.com>).

Excluded Features

While the EViews Student Version Lite offers almost all of the functionality of EViews 11, there are a few features that are not supported:

- Programming capabilities are not supported. EViews 11 contains an advanced programming language that allows you to write and execute sophisticated programs in batch mode. EViews Student Version Lite is limited to interactive use.
- X-11, X-12, X-13ARIMA-SEATS and Tramo/Seats X-11 seasonal adjustment are not included.

Alternative seasonal adjustment methods (using the ratio-to-moving average and difference-from-moving average techniques) *are provided*.

- COM automation support (including R and Matlab support) are not provided.

Capacity Restrictions

EViews 11 Student Version Lite has hard capacity limits on observations and objects that may not be exceeded. These limits prohibit you from performing an operation that results in a workfile containing more than:

- 1,500 observations per series (where “series” includes ordinary numeric series, formulae, links and alpha series).
- 15,000 total observations (series*obs-per-series) per workfile page (not including the built-in RESID series).
- 60 objects per workfile page.

If a hard capacity limit is reached, the operation will fail and EViews will issue an error message.

General Restrictions

In addition, EViews Student Version Lite imposes the following restrictions:

- Workfiles are limited to a maximum of 3 pages.
- Models are limited to a maximum 10 equations.

Any attempt to create a workfile or model object that exceeds the corresponding limit will fail immediately and EViews will display an error message.

Saving and Output Restrictions

EViews Student Lite places strong restrictions on the saving and output of data:

- Saving or exporting of data is not allowed in EViews Student Lite.
- In addition, copy-and-paste of table output is restricted to copying an image of the output—the underlying numeric values may not be copied.

General Saving and Output Restrictions

The Student Version Lite places additional restrictions on database use and output redirection:

- Storing objects to databases is not supported (retrieval of objects from databases is supported). Database auto-search is disabled.
- Redirection of print output to text and RTF files is restricted. Redirection of output to Spool, Table, and Graph objects is allowed

Getting Started

Congratulations on your purchase of EViews Student Lite, a state-of-the art program that offers premium forecasting and analysis tools within a flexible, easy-to-use interface. We are confident that you will find that EViews allows you to quickly and efficiently manage data, to perform econometric and statistical analysis, to generate forecasts or model simulations, and to produce high quality graphs and tables for publication or inclusion in other applications.

This guide will lead you step-by-step through the installation and registration procedure for EViews Student Lite.

Installing EViews

Your copy of EViews Student Lite is distributed via download. The installation procedure differs slightly depending on whether you choose to install the Windows or the Mac version.

Windows Installation

To begin installation, simply click on the “EViews11SVInstaller(64-bit).exe” executable program file.

- First, you will be prompted to read and accept the License Agreement, and to designate a directory into which you wish to install your copy of EViews. If you wish to change the default installation directory, click on **Browse** and navigate to the desired directory. Click on **Next** to continue.
- Select the components you wish to install and click on **Next**.
- Lastly, you will be asked about setting up a Start Menu folder containing shortcuts to the EViews example files folder and the EViews program executable. Clicking on **Next** starts the actual installation of files onto your computer.

You should note that as part of the installation procedure, EViews will prompt you to register files with the extensions “.WF1”, “.PRG”, “.EDB”, “.AIPZ”, and “.UIPZ”. If these extensions are already registered, possibly by an earlier version of EViews, you will be prompted to allow EViews 11 to override the existing registration. Registering the extensions is not required, but doing so will allow you to double-click on files with these extensions to launch EViews.

Once the installation procedure is completed, click on **Finish**. If you have elected to create an EViews shortcut, the EViews Start Menu folder will open. To launch EViews, double-click on the EViews 11 icon. Subsequently, you may launch EViews using the shortcut on your desktop or by selecting EViews from the Start Menu shortcuts, if present, by double-clicking on

EViews registered file types, or by navigating to the EViews installation directory and double-clicking on the EViews icon.

Mac Installation

When you double-click on your downloaded “.DMG” file, the setup program will display a setup window. Click on the “EViews 11 Student Version.pkg” icon to launch the installer.

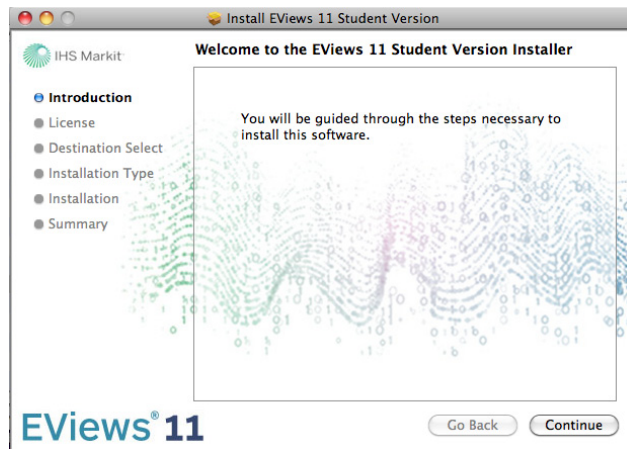
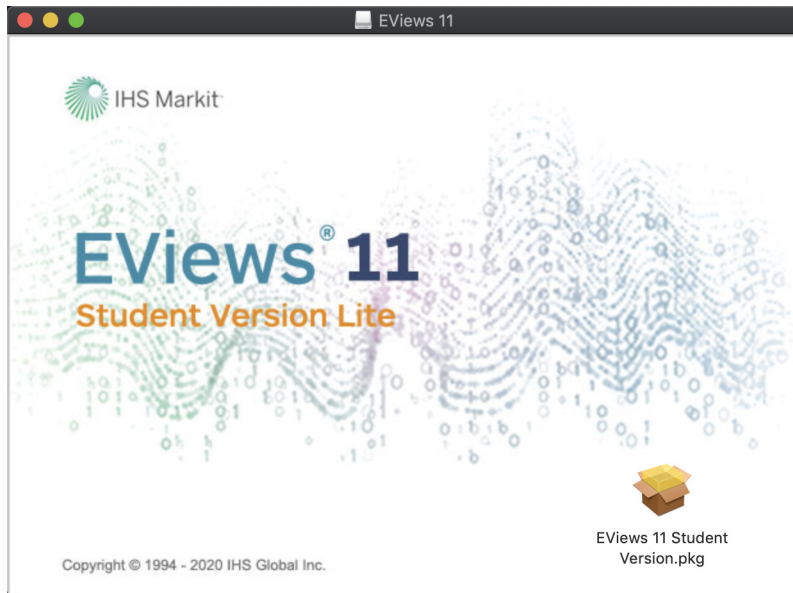
The installer will lead you step-by-step through the installation procedure.

- First, you will be prompted to read and accept the License Agreement. Click on **Continue** and then **Agree** to accept the terms of the license.
- Next, you must designate a location into which you wish to install your copy of EViews. By default, the installer will install the program into the “Applications” folder on your primary hard drive. If you have a more than one attached hard drive and wish to change the default, click on **Change Install Location...**, select the desired drive icon, and click on **Continue**.
- Click on **Install** and enter your Mac user-password to copy the EViews files to your hard drive in the specified location.

EViews will proceed to copy the files to the installation location. (Note that the reported installation time may not be accurate.) Once the installation procedure is completed, click on **Close**.

To locate your EViews installation, click on the “Applications” folder in your Dock, or use Finder to navigate to the installation location. To launch EViews click on the **EViews 11SV** icon in the “Applications/EViews 11SV” folder. To facilitate subsequent launching of the EViews program or access to the folder, you may drag the EViews icon or folder and drop it on your Dock.

Additional discussion of EViews Student Lite Mac-specific issues may be found in the “EViews Mac Notes.pdf” file located in your EViews 11SV folder.



Registering EViews

What is Registration?

To use EViews 11 Student Version Lite on a specific computer, you must first register the program using the serial number provided with this guide or your textbook bundle. EViews registration is the one-time process of assigning a serial number to a specific machine, sending a unique machine ID number to IHS Global Inc., and writing some information to your Win-

dows registry or Mac application support directory. This is a simple process that can be performed in a few seconds.

You will be prompted to enter a valid EViews Student Lite serial number. Enter the serial number and your name, and if you are connected to the internet, you may click on **Register now** to finish registration. If you do not already have a serial number, you may request one by clicking on the link.

The Student Version Lite (featuring a serial number beginning with “L11”) may be used to register a single machine.

Once registered on a given machine, the EViews 11 Student Version Lite will run for a single year.

You should see a message indicating that registration was completed successfully, along with the number of machines that have been registered to the serial number.

Note that there are some circumstances in which auto registration will fail.

Obviously, auto registration will not work if the computer is not connected to the Internet. If registration fails, you should first verify that you have Internet access. Second, your computer may be behind a firewall which does not allow the required communication between your computer and our servers. Furthermore, while unlikely, it is possible that all of our registration servers are temporarily unresponsive.

If you continue to have difficulties, please contact our office:

IHS Global Inc.

EViews Registration

Instructions

To register you must get a Registration Key by one of the following

- 1) Using your browser, go to the EViews registration page and the User Information given below. [Go to www.eviews.com/register](http://www.eviews.com/register)
- 2) Email the 3 lines of User Information to: register@eviews.com
- 3) Phone IHS at (949) 856 -3368 and provide the User Information.
- 4) Mail the 3 lines of User Information to: IHS Global Inc.
Attn: Registration
4521 Campus Drive, #336
Irvine, CA 92612

User Information: Serial # e1100100 - 1a2b0001 - fa3e501a

Name Jane Q. Student

Machine ID 4a12f11c - a412df16 - 00fcf6d8 - 9f83c859

Enter the Registration Key:

Attn: Registration
4521 Campus Drive, #336
Irvine, CA 92612
Email: register@eviews.com
Phone: 949-856-3368

Please provide a registration name, full 24-character serial number, and the machine ID number.

Frequently Asked Questions about Registration

While the registration procedure should be straightforward, we understand that you may still have questions. The following are answers to the most frequently asked questions:

- *How do I find my serial number and other information about my copy of EViews?*

Your copy of EViews contains information about your registration status, as well as the product version and build date of the program. To obtain this information, simply select **Help/About EViews** from the main EViews menu.

- *How do I change the name in which my copy is registered?*

Your copy of EViews contains the name in which it was first registered. This name cannot be changed.

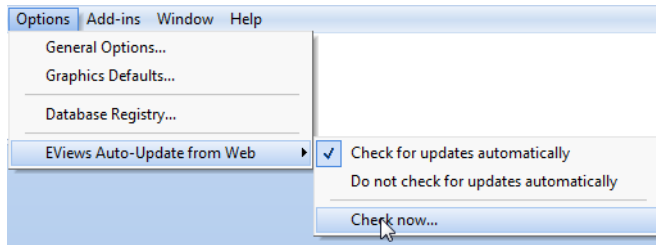
- *What if I have trouble registering?*

We do not anticipate that you will have problems registering your copy of EViews. Please feel free to contact our office if you encounter difficulties.

Updating Your Copy of EViews

EViews 11 offers an automatic updating feature that can check for new updates every day, and install an updated version if available. (The automatic update feature can be enabled or disabled from the **Options/EViews Auto-Update from Web** menu item.)

Alternately, you may manually check for updates from within EViews at any time by selecting **Check now...** under the **EViews Auto-Update from Web** menu item, or by selecting **EViews Update** from the **Help** menu.



Updating the Mac version may require you to download a file manually. In this case, the EViews update will direct you to the location of an updated PKG file. Please download the file and repeat the installation steps given above (“[Mac Installation](#),” on page 4).

You may also visit the EViews website to check for updates to the EViews program and other components (documentation, sample data, and sample programs). Use your browser to go to:

<http://www.eviews.com>

and navigate to the downloads area. Downloading updates *will not* require re-registration of EViews on any previously registered computer. Simply download the update, run the installer, and you will have the latest shipping copy of your software.

<http://www.eviews.com/help/helpintro.html>

Note that the Help System and PDF documentation describe the full version of EViews 11. Both contain descriptions of features that are not available in the Student/Lite Version.

Using EViews Student Version Lite

EViews 11 is a very powerful program that places a wide range of statistical and graphical techniques at your fingertips. EViews offers an interface that is so easy to use that most users can jump right in and work productively.

The following discussion should be enough to get you up and running with EViews Student Version Lite. The discussion assumes that you have already installed and registered the program as described in [“Getting Started” beginning on page 3](#).

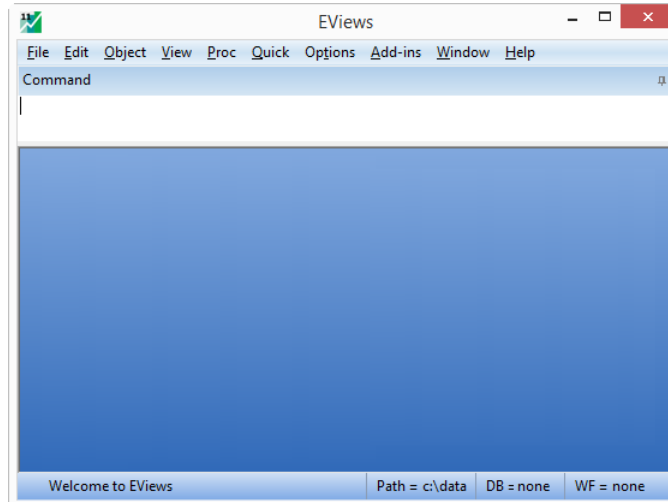
Starting EViews

On a Windows machine, you may launch EViews 11 in all of the usual ways:

- double-clicking on the executable icon or shortcut,
- double-clicking on an EViews associated file (“.WF1”, “.EDB”, etc.),
- drag-and-dropping a compatible file (EViews workfile, EViews database, or an supported external data file—such as an Excel or ASCII file) onto the EViews executable icon or shortcut.

On a Mac, you may launch EViews by:

- clicking on an EViews associated file (“.WF1”, “.EDB”, etc.),
- clicking on the Applications folder in the Dock, then on the EViews 11SV icon inside the EViews 11SV folder,
- clicking on an EViews 11SV alias in the Dock (if present),
- drag-and-dropping a compatible file (EViews workfile, EViews database, or an supported external data file—such as an Excel or ASCII file) onto the EViews icon (or alias).



When you launch the program you should see the main EViews window. Depending on how you launched the program, you may see additional windows showing an open EViews workfile or database, or a dialog prompting you to import your external data file.

If EViews displays a message that your copy of EViews Student Version Lite has not been registered, you must do so before continuing.

[“Registering EViews” beginning on page 5](#) offers step-by-step instructions for registering your copy of EViews Student Version Lite.

An EViews Primer

While EViews is so easy-to-use that you can probably start by jumping right on in with both feet, it doesn't hurt to have a guide along to show you the ropes. To get you started, we have included a PDF of the book *EViews Illustrated* in your student version installation directory.

EViews Illustrated is a primer to the EViews program, filled with examples, step-by-step instructions, and screen-shot images. Written by Richard Startz, professor of Economics (now) at the University of California, Santa Barbara, a long-time EViews user, *EViews Illustrated*'s 400+ pages offer a step-by-step guide to the EViews program.

While nominally tied to an earlier version of EViews, *EViews Illustrated* offers a valuable guide to EViews 11, walking you through the basics of EViews, from launching the program, to importing existing data and transforming the data, data analysis, regression estimation, forecasting, and much more.

The full text of this book may be accessed from within EViews by selecting **Help/EViews Illustrated - An EViews Primer** from the main EViews menu, or from outside of EViews by navigating to the file and opening it using Acrobat Reader.

If you are new to EViews, we recommend that you take a look at the first three or so chapters, and follow along at home with the examples

Note: all of the *EViews Illustrated* data files are available in your EViews Student Version Lite installation directory.

On a Windows machine, you may locate the files by navigating to your EViews installation directory (typically “c:\Program Files\EViews11SV\” or “c:\Program Files (x86)\EViews11SV”) and locate the “EViews Illustrated Data” directory. On a Mac you may use the Dock alias or Finder to locate the “EViews11SV/EViews Illustrated Data” folder inside your “/Applications” folder.

All of the data from the book are provided in the form of EViews workfiles, organized by chapter. To open a EViews workfile in Windows, simply double click on its icon or drag it onto the EViews icon or the EViews window. You may also navigate to and select the file using the file open dialog from within EViews (**File/Open/EViews workfile...**). To open an EViews workfile on a Mac, drag-and-drop the file onto the EViews alias in the Dock or icon in the “/Applications” folder, or navigate to and select the file using the EViews file open dialog (**File/Open/EViews workfile...**).

Manuals and Local Help System

We note that EViews Student Version Lite includes extensive documentation and help system support. If you ever run into trouble or need more info, simply click on **Help** in the main EViews menu to access all of the included help resources.

The full set of EViews manuals is included with the Student Version in the form of PDF files. You may access the PDF files by clicking on **Help/PDFs** in the main EViews menu, and selecting **Users Guide I**, **Users Guide II**, **Command & Programming Reference**, or **Object Reference** from the drop-down menu, or by navigating to your EViews installation folder and looking in the “Docs” sub-folder. The PDF files are fully indexed, and contain hypertext links to aid you in navigating through the material.

Note that the PDF documentation describes the full version of EViews and includes descriptions of features that are not available in the Student and Lite Versions.

In addition, your EViews Student Version Lite also contains an extensive help system that parallels the printed documentation. You may access the help system by clicking on **Help** in

the main EViews menu, then selecting **EViews Help Topics...** to access the main help page, or selecting **Quick Help Reference** and an entry to jump to a specific sub-topic.

There are additional PDF documents that you may access from the **Help** menu: the *EViews 11 Student Version Lite*, (which you are currently reading), and, as noted above, the book *EViews Illustrated*.

Online Help

We strongly encourage you to take advantage of the tutorials provided on the EViews website:

<http://www.eviews.com/Learning/index.html>

You will find a set of PowerPoint tutorials teaching the basics of EViews, accompanied by data files so that you may follow along with your own copy of EViews. The tutorials offer an excellent way of getting up-and-running with EViews and provide step-by-step examples of commonly performed operations.

You may also access the EViews documentation online at:

<http://www.eviews.com/help/helpintro.html>

Lastly, we encourage you to visit the EViews Online Forum, where you can ask questions of and share information with other EViews users.

The forum address is:

<http://forums.eviews.com>